

WAHLS, NAOMI SPAN-1010-E02-1 BEGINNING SPANISH I Online Administration
 Dept: MODERN LANGUAGES Forms requested: 27 Returned: 4 College: Liberal Arts & Sciences

Comparison info for dept, college, and campus is for your instructor group and the course level ONLY, using Fall 2014 data only due to new FCQ form implemented Fall 2014.

Group: TA: Teaching Assistants Level: Lower division

Sections in comparisons: Dept: 3 College: 141 Campus: 150

Profile of your avg. ratings
(with 95% confidence bands)

Item No.	Your rating		Diff from			Percentile in			Number of responses								Averages in								
	Avg.	Median	Dept	Coll	Campus	Dept	Coll	Campus	1	2	3	4	5	6	BL	SD	1	2	3	4	5	6	Dept	Coll	Campus
2 Personal interest before enrolled	3.8	4.0	**	0	0	**	45	42	1	0	0	2	0	1	0	2.1	-----*						4.1	3.8	3.9
3 Instr effectiveness encouraging interest	3.5	3.5	**	---	---	**	6	5	1	0	1	1	0	1	0	2.1	-----*						4.8	4.7	4.7
4 Instr availability for assistance	4.0	4.5	**	---	---	**	4	4	1	0	0	1	1	1	0	2.2	-----*						5.2	5.1	5.1
5 Intellectual challenge of course	4.3	5.0	**	-	-	**	27	26	1	0	0	0	2	1	0	2.2	-----*						4.8	4.5	4.6
6 How much you learned in course	3.3	3.0	**	---	---	**	3	3	0	2	0	1	1	0	0	1.5	-----*						4.5	4.7	4.7
7 Course overall	2.8	3.0	**	---	---	**	1	1	1	1	0	2	0	0	0	1.5	-----*						4.2	4.7	4.7
8 Instructor overall	3.3	3.0	**	---	---	**	3	3	1	1	0	1	0	1	0	2.2	-----*						4.7	5.2	5.1
9 Instr respect/professional treatment	5.5	5.5	**	-	-	**	14	15	0	0	0	0	2	2	0	0.6	-----*---						5.8	5.7	5.7
1 Hrs/week spent on course (incl class)	10-12	10-12	**	+++	+++	**	96	96	0	1	0	2	1	0	0	1.3	-----*						7-9	7-9	7-9

Hrs/week scale: 0-3=1, 4-6=2, 7-9=3, 10-12=4, 13-15=5, 16+=6

For more info, see below and
www.colorado.edu/fcq/stats

Optional questions

Item No.	Avg.			Lowest								Highest			
	rating	Median	SD	1	2	3	4	5	6	BL	NA	1	2	3	4
646 Clarity of course objectives was	4.5	4.5	1.3	0	0	1	1	1	1	0	0	0	0	0	0
647 Quality of textbooks and supporting materials was	2.8	2.5	1.0	0	2	1	1	0	0	0	0	0	0	0	0
648 This course built on other courses I have taken: little=1 2 3 4 5	1.7	2.0	0.6	1	2	0	0	0	0	0	1	0	0	0	0
649 The quality of individual assistance provided by the instructor w	4.0	4.5	2.2	1	0	0	1	1	1	0	0	0	0	0	0
650 The quality of individual assistance provided by the teaching ass	1.0	1.0		1	0	0	0	0	0	0	3				
651 Instructor encouraged independent thought: little=1 2 3 4 5 6=ver	4.0	4.5	2.2	1	0	0	1	1	1	0	0	0	0	0	0
652 Would you choose another course with this instructor? never=1 2 3	3.0	3.0	1.8	1	1	0	1	1	0	0	0	0	0	0	0
653 Instructor's sensitivity to the background and preparation of stu	5.0	5.5	1.4	0	0	1	0	1	2	0	0	0	0	0	0
642 Course challenged me to think critically	3.3	4.0	2.1	1	0	0	1	1	0	0	1	0	0	0	1
643 Course challenged me to write effectively	3.3	3.0	1.5	0	1	1	0	1	0	0	1	0	0	0	1
644 Course challenged my quantitative skills	3.8	4.5	1.9	1	0	0	1	2	0	0	0	0	0	0	0
645 Course challenged my verbal communication skills	3.3	4.0	2.1	1	0	0	1	1	0	0	1	0	0	0	1

Standard item correlations
2 3 4 5 6 7 8 9

Correlations are printed only
if all 9 standard items have
at least 10 responses each.

Correlation coefficients range
from -1.0 to 1.0, and indicate
the direction and strength of the
relationship between two items.

Occasionally some (but not all)
correlations will be missing. This
can happen if all students give the
same rating on a particular item.

Median is the middle score when all ratings are rank-ordered. SD (standard deviation) is the DISagreement among raters. Difference of your avg. from the group avg. for Dept, College, and Campus ranges from --- to +++. 0 = negligible difference. Percentile = percentile of your average rating within a particular group: Dept, College, and Campus.

** 'Diff from' and 'Percentile in' statistics not displayed if comparison group has fewer than 10 sections.

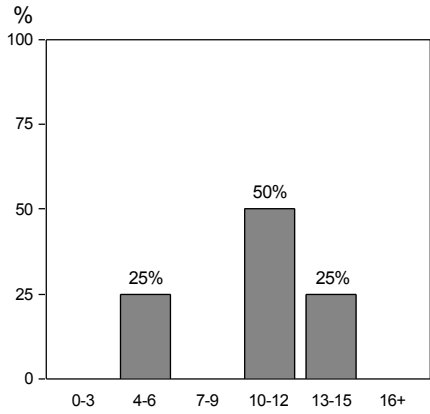
A confidence band indicates an interval within which we are 95% confident that the 'true' value of the average lies.

SEE GRAPHS ON REVERSE SIDE

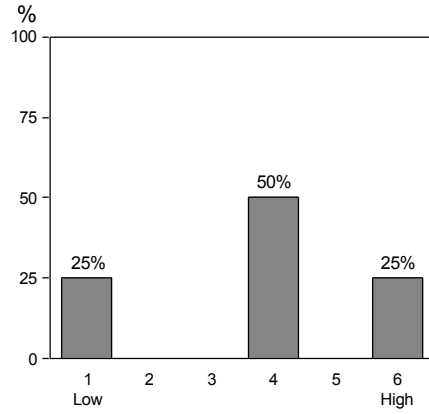
See www.colorado.edu/fcq for details on all statistics in report, and for FCQ results from the last 7 years.

Blank (BL) and non-applicable (NA) responses are tallied but excluded from averages.

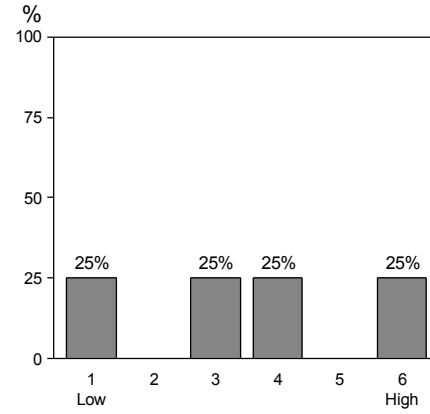
FCQ Results, Fall 2014, SPAN-1010-E02 -- WAHLS, NAOMI



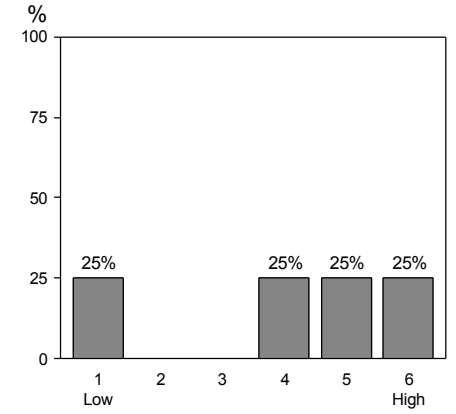
1: Hrs/wk spent on course (including class)



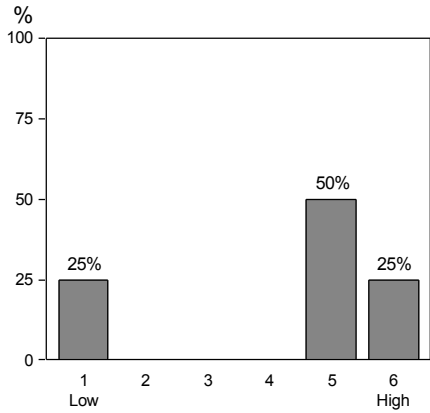
2: Personal interest before enrolled



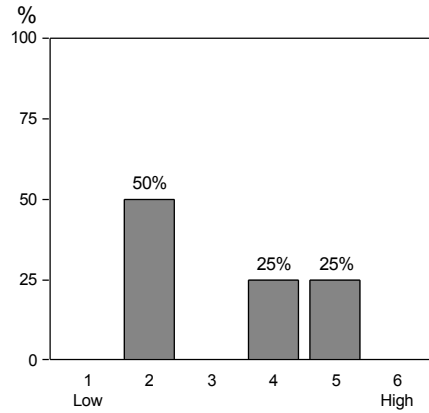
3: Instructor encourages interest



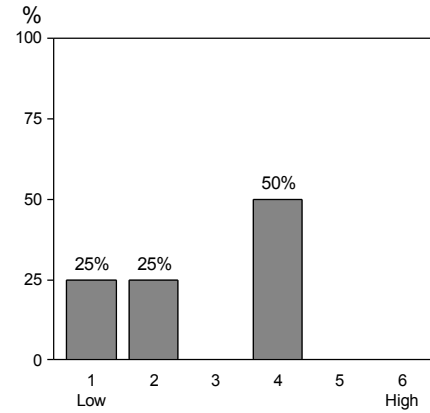
4: Instructor availability for assistance



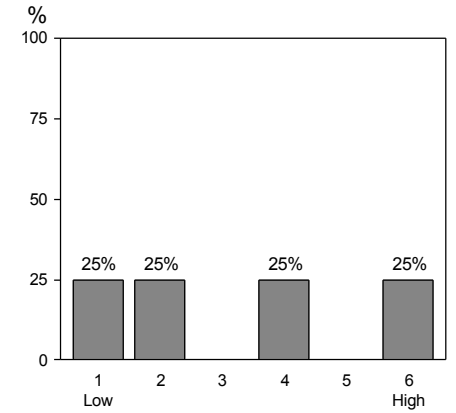
5: Intellectual challenge of course



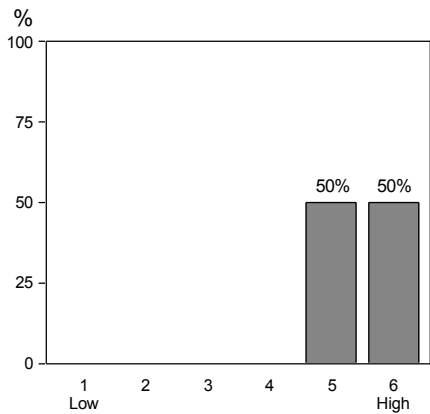
6: How much learned in course



7: Course overall



8: Instructor overall



9: Instructor respect for students

